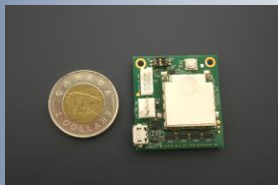




Kit Benefits:

- ◆ Compact Design in Production Ready Packaging
- ◆ Low Power Consumption with Built-In Battery Support
- ◆ Ubiquitous 3G Connectivity with Data and Voice Support
- ◆ Ready to go Software Development Environment
- ◆ Feature rich peripheral set, including GPS, accelerometer and Bluetooth.
- ◆ Scalable and Customizable Design
- ◆ Environmental and Regularity Compliant



iQ Wireless Development Kit Overview

Intrinsyc’s iQ Wireless Development Kit (iQ WDK) provides a feature-rich platform that delivers a perfect starting point for creating real-time location aware solutions. The kit solution is built on a field deployable compact wireless module that offers a range of in-built peripherals, is fully programmable, and enables developers to quickly accelerate their products to market.

Features

The iQ WDK is a flexible and complete platform for hardware and software development, evaluation, and test. The iQ WDK comprises a production quality wireless module, an expansion board, the BREW software development environment, documentation and all of the accessories required for immediate development.

Utilizing QUALCOMM’s compact and powerful Internet of Everything Modules (IEMs) the stand alone wireless module enables ubiquitous 3G connectivity in very small form factor, and in a variety of devices, including: advanced mobile phones, machine-to-machine (M2M) devices and a growing number of connected consumer electronics. The wireless module offers a compact design in production ready packaging and provides voice, GPS, and data connectivity through one of the following four unique versions:

- GSM/HSDPA
- GSM/UMTS
- EV-DO
- CDMA2000 1X

The expansion board hosts the wireless module along with a wide variety of external peripherals, including a camera, Bluetooth, keypad, display, GPS and radio antennas, and expansion connector.

The iQ WDK’s flexible architecture enables developers the ability to rapidly bring their wireless devices to market. Application development is performed directly on the production-ready platform, enabling a seamless transfer of your application and hardware design into manufacture.

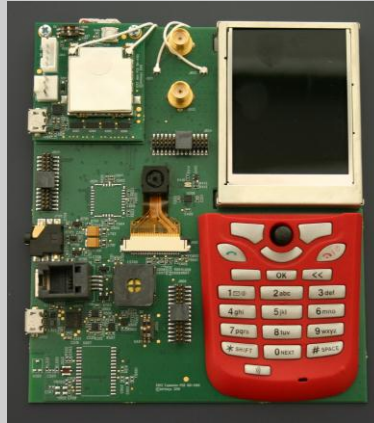
The iQ WDK is backed by technical support from Intrinsyc’s experienced product development engineering team that can help customers overcome technical and resource problems.

Intrinsyc is committed to providing customers with effective embedded solutions including offering all of the accessories required to have a complete solution up and running in a very short time.

iQ Wireless Development Kit Description

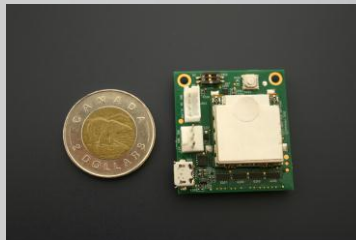
iQ Expansion Board with:

- ◆ iQ Wireless Module
- ◆ Quick Start Guide
- ◆ CD with:
 - Hardware documentation
 - Software documentation
- ◆ USB Cable
- ◆ Power Supply
- ◆ Display
- ◆ Keypad
- ◆ Bluetooth
- ◆ Camera (1.3 or 3M Pixel support)
- ◆ Audio connections (headset, handset and loud speaker)
- ◆ External peripheral connectors - antenna, serial, display, i/o, etc
- ◆ License Agreement
- ◆ Warranty and Support Card



iQ Wireless Module with:

- ◆ QUALCOMM Internet of Everything Module (IEM)
- ◆ SIM Socket
- ◆ USB (micro USB connector)
- ◆ Power and baseboard connections



Software Development Environment

- ◆ BREW/BMP
- ◆ AMSS default User Interface

Power

- ◆ Battery pack: 3.7V, 1.8Ahr, Li-Ion
- ◆ Battery input connector: 3.4V - 4.2V (3.7V nominal)
- ◆ USB charging (Li-Ion): 5V ±10%, 500mA

Environmental

- ◆ Operating temperature: -20°C to +60°C
- ◆ Storage temperature: -40°C to +80°C

QUALCOMM IEM Description:

One of four IEM network modules:

- ◆ Quad Band HSDPA/UMTS/EDGE/GPRS/GSM
- ◆ Quad Band UMTS/EDGE/GPRS/GSM
- ◆ Dual Band 1X/EV-DO
- ◆ Dual Band CDMA2000

Each module supports:

- ◆ GPS
- ◆ Accelerometer
- ◆ A 90-pin board-to-board connector including:
 - USB 2.0
 - Bluetooth 2.0 BTS4025 module
 - QVGA LCD
 - Camera (1.3 or 3M Pixel support)
 - Keypad (5x5 matrix)
 - Keypad backlight drive
 - 2 LED control lines
 - Vibrator control (connected to LED)
 - General Purpose PDM (LCD backlight and brightness control)
 - Audio - handset, headset, speaker
 - Primary antenna RF coax connector
 - Secondary RF coax connector
 - GPS (WCDMA modules only)
 - JTAG connector
 - RUIM/SIM socket



About Intrinsic

Intrinsic empowers device makers, mobile operators, and silicon vendors to deliver compelling, next generation mobile and embedded devices with faster time-to-market, higher quality, and differentiating innovation. Our customers and partners rely on our award-winning device development software and services including our industry-leading navigation software and LBS solutions. Intrinsic globally supports customers with solutions that span all major mobile operating systems and platforms including Android, Linux, QNX, Symbian, Windows Embedded CE and Windows Mobile. Intrinsic is publicly traded (TSX: ICS) and headquartered in Vancouver, Canada, with offices in China, and Taiwan.

Head Office - Canada
700 West Pender Street
10th Floor
Vancouver, BC
Canada V6C 1G8
Tel: +1-604-801-6461

China Office
Intrinsic Software (Beijing), Inc.
Unit 407 - Prime Tower
#22 Chao Wai Street
Chao Yang District
Beijing, China
100020

Taiwan Office
Intrinsic Software International - Asia-Pacific
Office
No. 181 - 3F Zhouzi Street
Neihu District
Taipei, Taiwan

www.intrinsic.com/iQ



© 2011 Intrinsic Software International, Inc. All rights reserved. ® Intrinsic, Soleus, Destinator and their respective logos are trademarks, registered and otherwise, of Intrinsic Software International, Inc. in Canada, European Union, Taiwan, U.S.A. and other jurisdictions. Other products and services mentioned in this document are identified by the trademarks or service marks of their respective companies or organizations.
iQ-28112010